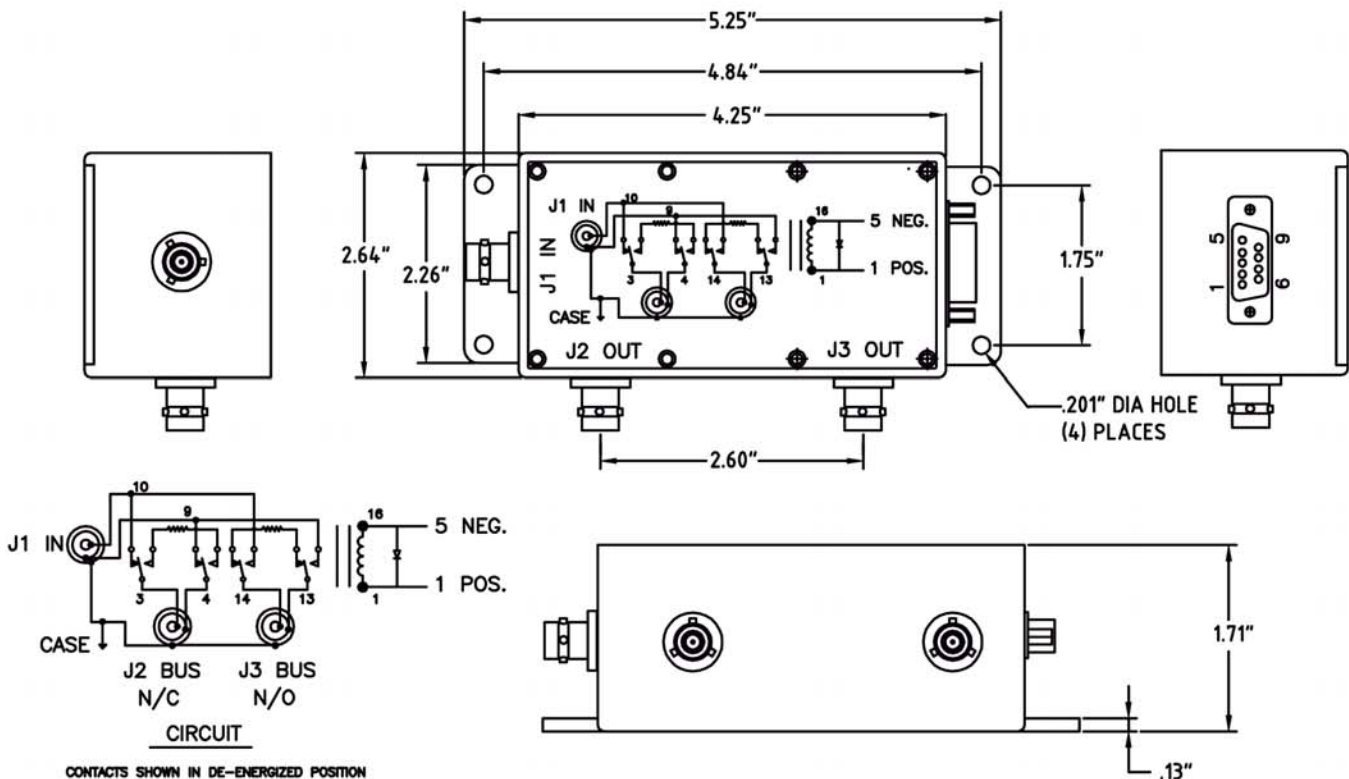


## BUS SEGMENTING RELAYS

PART NUMBER	DESCRIPTION
90 50274	Bus Segmenting by Control Voltage 28 VDC
90 50275	Bus Segmenting by Control Voltage 5 VDC



### 1.0 ELECTRICAL RELAY SPECIFICATIONS:

1.1 NOMINAL VOLTAGE	AS NOTED ABOVE
1.2 NOMINAL OPERATION CURRENT	7.5 mA (+/- 10%)
1.3 COIL RESISTANCE—Ohm	3,200 (+/- 10%)
1.4 NOMINAL UNIT WEIGHT	10.1 OUNCES (286 GRAMS)

### 2.0 MECHANICAL SPECIFICATIONS:

- 2.1 HOUSING: DIE CAST A380 ALUMINUM ALLOY. CLEAR ANODIZED AND PAINTED WITH TEXTURE. BAKED ENAMEL, COLOR BLUE.
- 2.2 COVER PLATE: 5052-H32 ALUMINUM, SATIN FINISH.
- 2.3 CONNECTOR 10-06592 OR EQUIVALENT

### 3.0 ENVIRONMENTAL:

- 3.1 OPERATING TEMPERATURE -40 C TO + 70 C

# Milestek®

MILESTEK CORPORATION  
1506 INTERSTATE 35 WEST  
DENTON, TX 76207  
PHONE: 866.524.1553  
FAX: 940.591.7086

PLEASE VISIT [www.milestek1553.com](http://www.milestek1553.com) FOR ADDITIONAL INFORMATION

DRAWN BY: MIKE GREENHILL	APPROVED BY: ROBERT PEREZ	DATE 08/07/09
TITLE: RELAYS	CAGE CODE: 42977	
DRAWING NO: 95274275	ISO 9001: 2008 CERTIFIED	REV: A
SCALE: NOT TO SCALE	TOLERANCE: <.1+/.1 .01/>.1+/- .1	SHEET: 1 OF 1